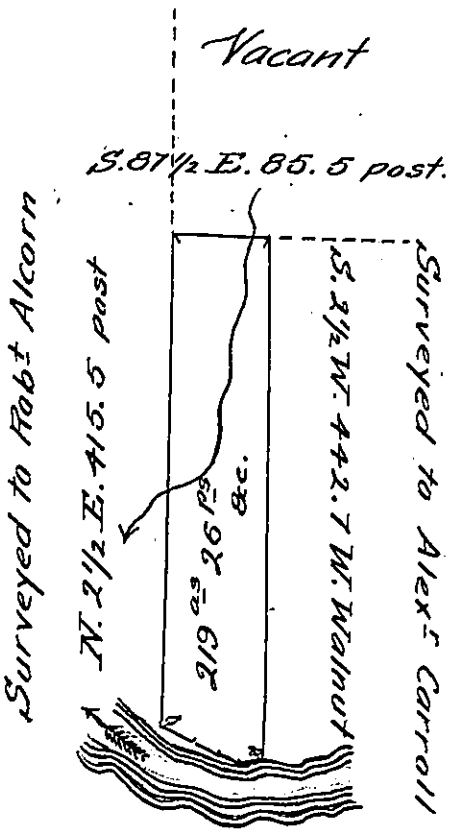


Courses and distances down
River from W. Walnut.

- N. 1. S. 82 W. 10
- " 2. N. 80 W. 24
- " 3. N. 65 W. 24
- " 4. N. 58 W. 34 to B. Oak



X

DRAFT of a tract of land situate in Cornplanter township, Venango County, North and West of and adjoining the Allegheny River being the Western part or half of a larger tract originally settled by Samuel Hulings and others.

Surveyed 8th December 1837 for William and Andrew - Howe {obl.} improvement and settlement.

Rich^d Irwin, D.S.

A copy of the above was received of Richard Irwin Esq^r former Deputy Surveyor of Venango County, the 27th May 1851 to Enter and make return thereof and is approved of by me.

Matthew Fiddle D.S.

To J. Porter Brawley Esq^r

Sur^t. Gen^l.

IN TESTIMONY that the above is a copy of the original remaining on file in the Department of Internal Affairs of Pennsylvania, made conformably to an Act of Assembly approved the 16th day of February, 1833, I have hereunto set my Hand and caused the Seal of said Department to be affixed at Harrisburg, this Twenty-Seventh day of May 1905.

Loac B Brown
Secretary of Internal Affairs.